

ACTUAL HARDWARE REQUIREMENTS FOR NON-STANDARD APPLICATIONS DEPENDS UPON ACTUAL APPLICATION REQUIREMENTS. HARDWARE SUPPLIED WITH A SPECIFIC TETHER KIT MAY DIFFER. CONSULT THE FACTORY IF NECESSARY.

Ltr	Revision	Date
A	ADDED TEE BOLT AND FAN COOLED MOUNTING VIEW	12/26/00

(FOR BLIND SHAFT ENCODERS ONLY)

IF B EXCEEDS A

THEN SUFFICIENT STANDOFF OR WASHERS ARE NEEDED TO ACHIEVE "NO STRESS" TETHER POSITION

"C" = "B" - "A"

SCOPE OF THIS PROCEDURE IS TO INSURE PROPER INSTALLATION OF HOLLOWSHAFT ENCODERS TO MOTOR OR FAN COOLED HOUSINGS FOR STANDARD OR NON-STANDARD APPLICATIONS.

STANDARD RECOMMENDED INSTALLATION PROCEDURE:

1. MEASURE SHAFT LENGTH AND CALCULATE THE REQUIRED STANDOFF FOR BLINDSHAFT ENCODERS.
2. ASSEMBLE WASHERS AS SHOWN.
3. SLIDE ENCODER ON MOTOR SHAFT BUT DO NOT TIGHTEN THE COLLET CLAMP UNTIL STEP 5.
4. TIGHTEN TETHER BOLT IN MOTOR HOUSING.
5. COLLET CLAMP IS SELF GAPPING TO THE ENCODER. INSURE THAT ENCODER IS FREELY RESTING ON SHAFT WITHOUT STRESS FROM TETHER ARM AND TIGHTEN COLLET CLAMP SCREW USING THREAD LOCK AND 40 IN-LBS TORQUE.
6. ROTATE SHAFT AND MEASURE BODY RUNOUT. IF ENCODER BODY RUNOUT EXCEEDS 0.010 INCH, REMOVE THE ENCODER AND RE-INSTALL.

ADDITIONAL CONSIDERATIONS FOR NON-STANDARD INSTALLATIONS - PLEASE READ.

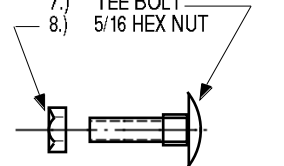
IF THE SHAFT LENGTH OF THE MOTOR IS IN EXCESS OF THE ALLOWED MAXIMUM SHAFT PENETRATION, INSURE THAT THERE IS SUFFICIENT ADDITIONAL TETHER MOUNTING SPACERS OR STANDOFFS (*DIMENSION "C"*) IN ORDER TO MOUNT THE TETHER IN A "NON-STRESS" POSITION. DO NOT BEND THE TETHER DURING THE INSTALLATION. THE TETHER FLEXIBILITY IS ONLY DESIGNED TO FLEX DURING ROTATION OF THE SHAFT AND SHOULD BE INSTALLED IN A "NON-STRESSED" CONDITION TO INSURE MINIMUM STRESS AND MAXIMUM BEARING LIFE.

FOR OLDER MODELS: IF COLLET CLAMP IS NOT NATURALLY SELF-SPACING FROM THE HOUSING, SHIM THE CLAMP FROM THE HOUSING TO INSURE FREE ROTATION CLEARANCE WHEN MOTOR SHAFT AND ENCODER SHAFT ARE SPINNING. CAUTION IF A SHIM IS NOT USED, A MECHANICAL INTERFERENCE OR A COCKED CLAMP MAY RESULT.

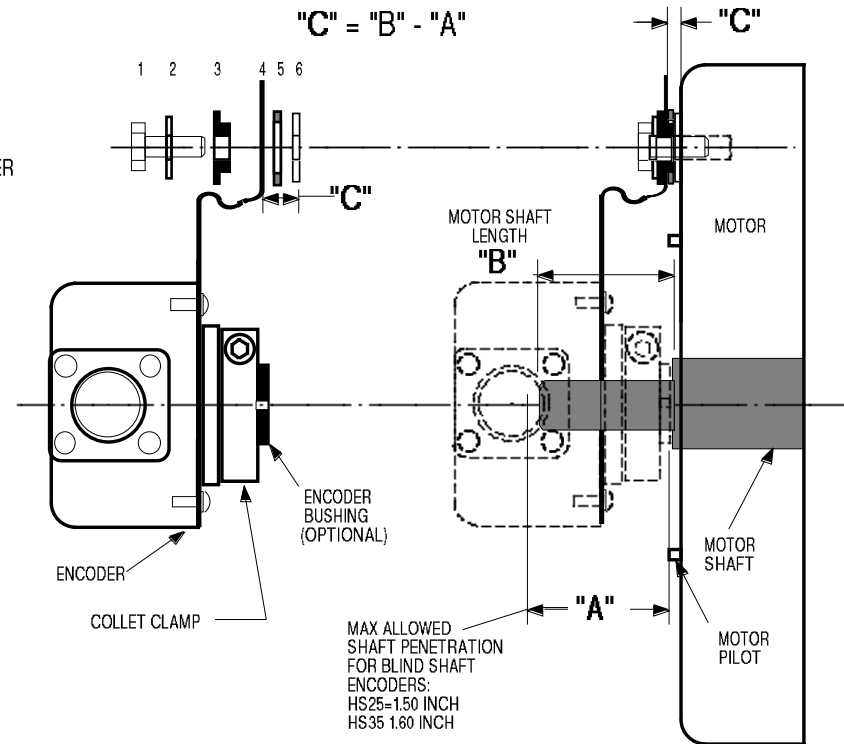
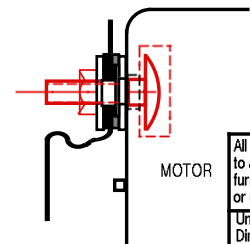
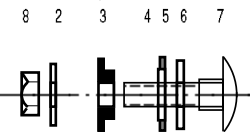
IF THE TETHER MOUNTING HARDWARE IS NOT COMPATABLE, i.e. BOLT DIAMETER DOES NOT MATCH WASHER INSIDE DIAMETERS, THEN CORRECT HARDWARE IS NECESSARY AND MUST BE OBTAINED IN ORDER TO ACHIEVE CORRECT CLAMPING OF THE TETHER. IT IS NOT RECOMMENDED TO ASSEMBLE THE TETHER TO THE MOTOR HOUSING WITHOUT THE PROPER STANDOFF OR WASHERS.

**R2 TETHER KIT
ITEM DESCRIPTION**

- 1.) 5/16 HEX BOLT
- 2.) S.S. FLAT WASHER
- 3.) NYLON SHOULDER WASHER
- 4.) TETHER ARM
- 5.) NYLON FLAT WASHER
- 6.) S.S. FLAT WASHER
- 7.) TEE BOLT
- 8.) 5/16 HEX NUT



(EXTRA HARDWARE FOR FAN COOLED HOUSINGS, SEE BELOW)



All drawings and specifications are and remain the property of BEI Motion Systems Company. All specifications are confidential and are not to be disclosed to any persons other than those to whom they are sent. No drawings, specifications or other data belonging to BEI Motion Systems Company which may be furnished to manufacturers or others for any purpose are to be regarded by implication or otherwise as in any manner licensing the holder or any other person or corporation or conveying any rights or permission to manufacture, use or sell any patented invention that may in any way be related thereto

Unless otherwise specified:
Dimensions are in inches.
Tolerances:
XXX = .005
XX = ±.01

BEI INDUSTRIAL ENCODER DIVISION
SENSORS & SYSTEMS COMPANY
7230 Hollister Avenue • Goleta, CA 93117-2891 • Tel: (805) 968-0782 • Fax: (805) 968-3154

Material	Drawn	RECOMMENDED INSTALLATION PROCEDURE HOLLOW SHAFT ENCODERS	
Finish	App'd	Code Ident. No.	Dwg. No.
	Scale	12050	924-08107
			Rev. A

Next Assy	Used on